

# NSEA 2022 GENERAL ELECTION ENDORSEMENTS

NEVADA STATE EDUCATION ASSOCIATION

## U.S. SENATE



## CONGRESS

CD-1



CD-2



CD-3



CD-4



## CONSTITUTIONAL OFFICES

GOVERNOR



LT. GOVERNOR



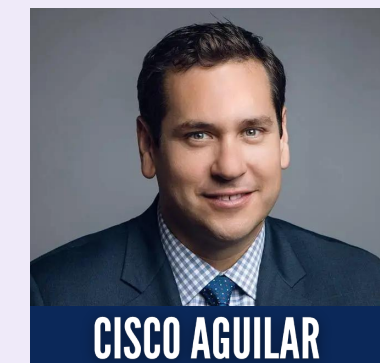
ATTORNEY GENERAL



TREASURER



SECRETARY OF STATE



CONTROLLER



## STATE ASSEMBLY

ASSEMBLY DISTRICT 1



ASSEMBLY DISTRICT 3



ASSEMBLY DISTRICT 5



ASSEMBLY DISTRICT 6



ASSEMBLY DISTRICT 7



ASSEMBLY DISTRICT 8



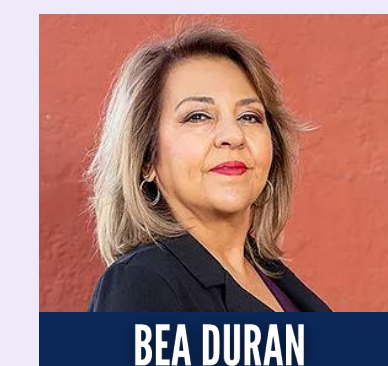
ASSEMBLY DISTRICT 9



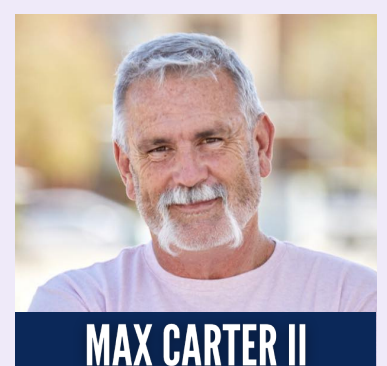
ASSEMBLY DISTRICT 10



ASSEMBLY DISTRICT 11



ASSEMBLY DISTRICT 12



ASSEMBLY DISTRICT 15



ASSEMBLY DISTRICT 16



ASSEMBLY DISTRICT 17



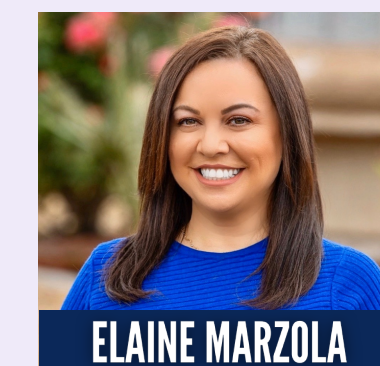
ASSEMBLY DISTRICT 18



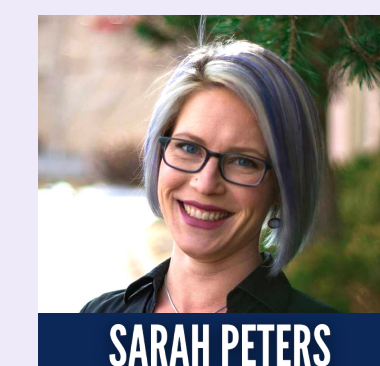
ASSEMBLY DISTRICT 20



ASSEMBLY DISTRICT 21



ASSEMBLY DISTRICT 24



ASSEMBLY DISTRICT 25



ASSEMBLY DISTRICT 27



ASSEMBLY DISTRICT 29



ASSEMBLY DISTRICT 30



ASSEMBLY DISTRICT 35



ASSEMBLY DISTRICT 42



## STATE SENATE

SENATE DISTRICT 2



## WASHOE COUNTY COMMISSION

DISTRICT 3



## BALLOT QUESTION 1

EQUAL RIGHTS



## WASHOE COUNTY TRUSTEES

DISTRICT B



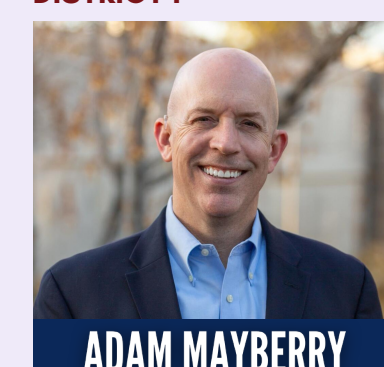
DISTRICT C



DISTRICT D

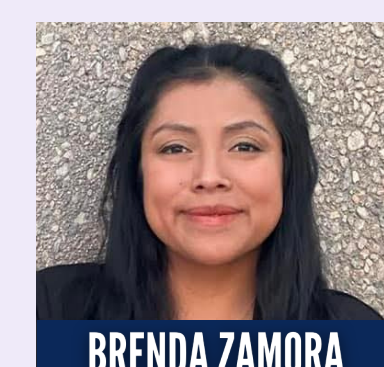


DISTRICT F

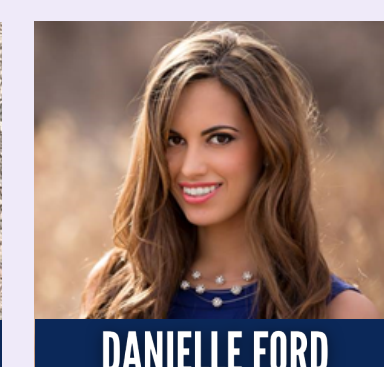


## CLARK COUNTY TRUSTEES

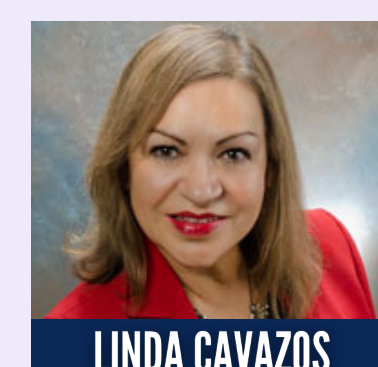
DISTRICT D



DISTRICT F



DISTRICT G



## MINERAL COUNTY TRUSTEES

INSIDE SEAT



**TIME FOR 20**  
INVEST IN EDUCATORS

**EARLY VOTING**  
OCTOBER 22 - NOVEMBER 4

**GENERAL ELECTION**  
NOVEMBER 8